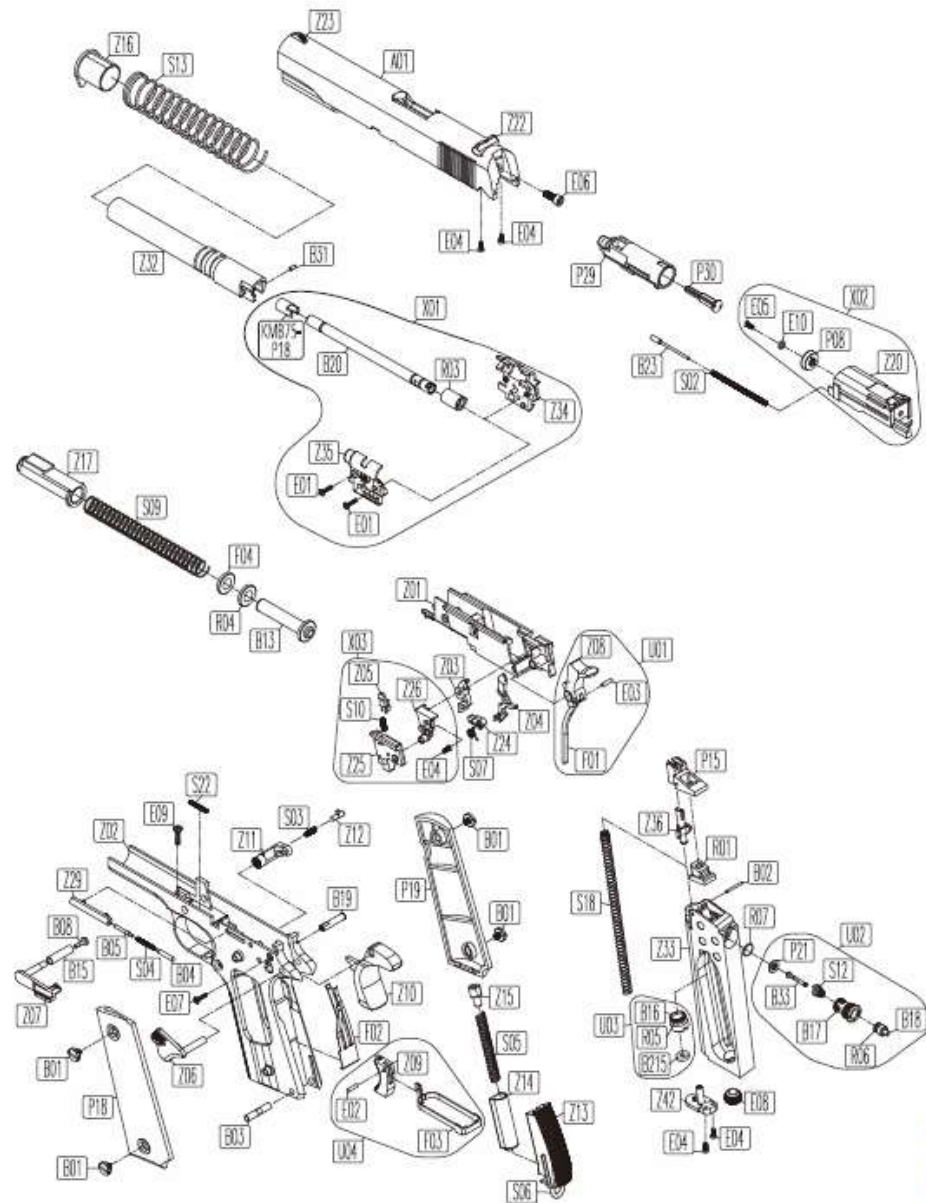


NO.	零件名稱	UNIT	NO.	零件名稱	UNIT	NO.	零件名稱	UNIT
P08	氣缸迫緊	CYLINDER PACKING	Z32	槍管導管	OUTER BARREL	B33	心棒	VALVE
P15	彈匣上部	MAGAZINE RIB	Z33	彈匣本體	MAGAZINE FRAME	B215	氣瓶頂針迫緊	PUNCTURE VALVE PACKING
KMB75-P18	槍管固定件	BARREL HOLD	Z34	槍管右蓋	INNER BARREL CASE (R)	S02	射嘴回位壓簧	LOADING NOZZLE RECOIL SPRING
P18	槍柄(左)	GRIP (L)	Z35	槍管左蓋	INNER BARREL CASE (L)	S03	彈匣卡榫壓簧	LATCH SPRING
P19	槍柄(右)	GRIP (R)	Z36	彈匣滑粒	MAGAZINE FOLLOWER	S04	止動片軸壓簧	SLIDE STOPPER PIN SPRING
P21	心棒迫緊	VALVE PACKING	Z42	彈匣底座配件	MAGAZINE BASE ACCESSORY	S05	擊鐵壓簧	HAMMER SPRING
P29	滑套射嘴	LOADING NOZZLE	R01	氣嘴迫緊	GAS ROUTE PACKING	S06	握柄扣環	GRIP BUCKLE
P30	氣流控制件	FLOATING VALVE	R03	子彈迫緊	RUBBER CHAMBER	S07	撞針扭簧	FIRING PIN SPRING
A01	上蓋	SLIDE	R04	導管壓簧緩衝件	OUTER BARREL SPRING BUFFER	S09	回位壓簧	RECOIL SPRING
Z01	擊鐵箱	CHASSIS	R05	O型環 S-8 (NBR)	O-RING S-8	S10	撞針卡榫壓簧	FIRING PIN CATCH SPRING
Z02	本體	FRAME	R06	O型環 S-4 (PU90)	O-RING S-4	S12	心棒壓簧	VALVE SPRING
Z03	擊鐵卡榫	HAMMER CATCH	R07	O型環 1X6id (NBR)	O-RING 1X6id	S13	導管壓簧	RECOIL SPRING
Z04	擊鐵卡榫釋放件	HAMMER CATCH	F01	擊鐵壓簧導桿	HAMMER SPRING GUIDE	S18	彈匣壓簧	MAGAZINE SPRING
Z05	撞針卡榫	FIRING PIN CATCH	F02	扳機回位彈片	TRIGGER RECOVER SPRING	S22	扳機壓簧	TRIGGER SPRING
Z06	保險(左)	SAFETY (L)	F03	扳機框	TRIGGER FRAME	E01	螺絲 直徑2.3X6 (宋黑磷)	SCREW 2.3X6
Z07	上蓋止動片	SLIDE STOPPER	F04	槍管導管壓簧配件	OUTER BARREL SPRING ACCESSORY	E02	彈簧梢 1.5X6黑	SPRING PIN 1.5X6
Z08	擊鐵	HAMMER	B01	槍柄螺絲	GRIP SCREW	E03	彈簧梢 2X8黑	SPRING PIN 2X8
Z09	扳機	TRIGGER	B02	彈匣上部軸	MAGAZINE RIB PIN	E04	螺絲 直徑2.3X5 (宋黑磷)	SCREW 2.3X5
Z10	握柄保險	GRIP SAFETY	B03	槍柄後罩軸	GRIP REAR COVER PIN	E05	螺絲 直徑M3X8XP0.5	SCREW M3X8XP0.5
Z11	彈匣卡榫	MAGAZINE CATCH	B04	保險定位軸	SAFETY LOCATOR PIN	E06	內六角螺絲 M3X10LXP0.5 黑	SCREW M3X10LXP0.5
Z12	彈匣卡榫配件	MAGAZINE CATCH ACCESSORY	B05	上蓋止動片軸	SLIDE STOPPER PIN	E07	螺絲 直徑 M2.6X6 黑 P0.45	SCREW M2.6X6
Z13	槍柄後罩	GRIP REAR COVER	B08	上蓋止動片定位軸	SLIDE STOPPER LOCATOR PIN	E08	內六角止付螺絲 M12XP1.0X8L	MAGAZINE BOTTOM CAP M12XP1.0X8L
Z14	擊鐵壓簧套	HAMMER SPRING SLEEVE	B13	回位導桿後部	RECOIL GUIDE REAR	E09	螺絲 直徑 M3.0X6 黑 P0.5	SCREW M3.0X6
Z15	擊鐵壓簧配件	HAMMER SPRING ACCESSORY	B15	上蓋止動片軸套	SLIDE STOPPER PIN SLEEVE	E10	彈簧墊圈 M3.0X0.6T	SPRING WASHER M3.0X0.6T
Z16	上蓋前罩	SLIDE FRONT BUSHING	B16	氣瓶頂針	PUNCTURE VALVE	X01	內槍管組件	INNER BARREL UNIT
Z17	固定套	PLUG	B17	氣閥本體	VALVE FRAME	X02	氣缸組件	CYLINDER UNIT
Z20	氣缸	CYLINDER	B18	心棒後部	VALVE REAR	X03	擊鐵左蓋組件	CHASSIS UNIT (L)
Z22	後準星	REAR SIGHT	B19	擊鐵箱軸	CHASSIS PIN	U01	擊鐵組件	HAMMER UNIT
Z23	前準星	FRONT SIGHT	B20	內槍管	INNER BARREL	U02	氣閥組件	VALVE UNIT
Z24	撞針	FIRING PIN	B23	射嘴壓簧導軸	NOZZLE SPRING GUIDE PIN	U03	氣瓶頂針組件	PUNCTURE VALVE UNIT
Z25	擊鐵箱左蓋	CHASSIS-LEFT	B31	槍管右蓋軸	OUTER BARREL AXLE (R)	U04	扳機組件	TRIGGER UNIT
Z26	擊鐵箱中蓋	CHASSIS-CENTER						
Z29	保險卡榫導件	SAFETY CATCH GUIDE						



Spare parts may be modified for quality improvement  
And such modification may be without advance notice.